



Keder-TRACK Profiles



Keder-TRACK profiles for perfect tensioning interior hanging banners.

Our Keder-TRACK profiles are manufactured from high-quality, anodised aluminium and provide an elegant and strong hanging system for a multitude of applications, including projecting banners, exhibition graphics and office screens. Our Keder-TRACK profiles are suitable for heavy-duty applications and are perfect for achieving and maintaining the correct banner tension.

Product Details

Keder-TRACK is a channel based system which offers a superior alternative to "pocket-and-bar" finishing for banners and fabrics. The fabric is finished with either a traditional 8mm round keder or a pocket and 8mm dowel to slot into the Keder-TRACK profile. The profile is then hung with tension cables or wall mount brackets to create tension.

Product Specifications

- ✓ Easy change
- ✓ Cost effective for even very large banners
- ✓ Wide range of accessories

Product Variations

- ✓ Flat and round profiles
- ✓ Hanging, wall mount and projecting

Detailed Data Sheets

[Keder-TRACK F](#)[Keder-TRACK R](#)[Keder-TRACK W](#)[Keder-TRACK ACCESSORIES](#)

Keder-TRACK F

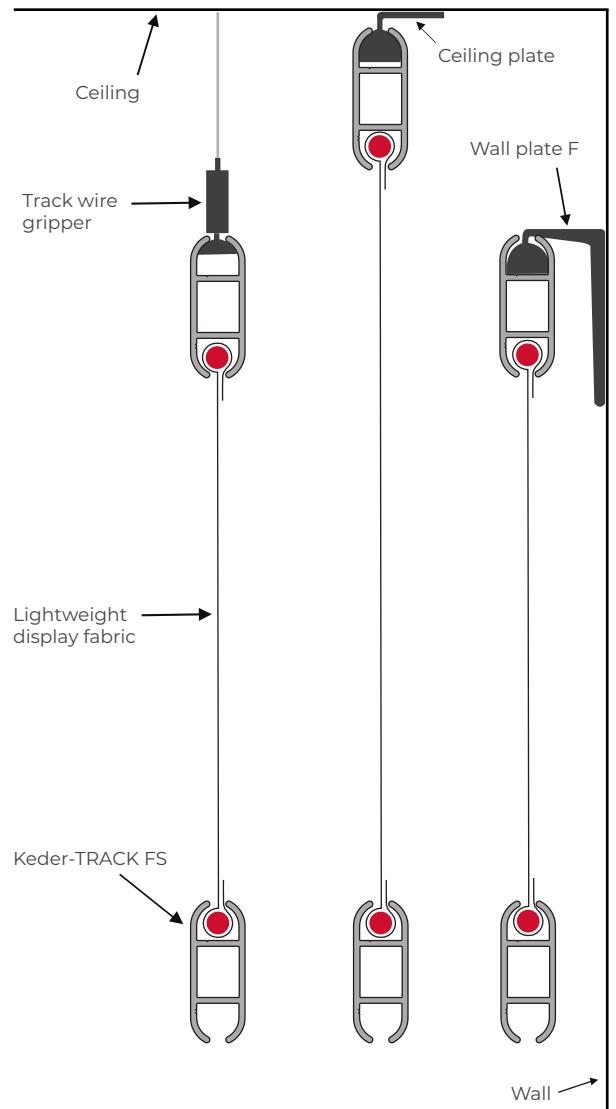
- ✓ Can be used for PVC banners, mesh and fabrics
- ✓ A range of fixings for hanging and wall mounting
- ✓ Pocket and rod or weld-on Keder
- ✓ Compatible Keder: 6-8mm



▶ Profile



▶ Example Fitting



▶ Specifications

Material

Aluminium 6063 T6

Dimensions

Width: 17mm

Depth: 44mm

Length: 6100mm

Finish

- Anodised
- Custom powder coat

Compatible Parts

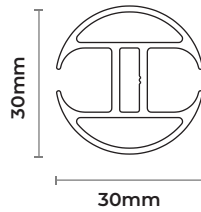
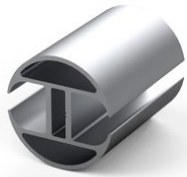
- See [Keder Accessories](#)

Keder-TRACK R

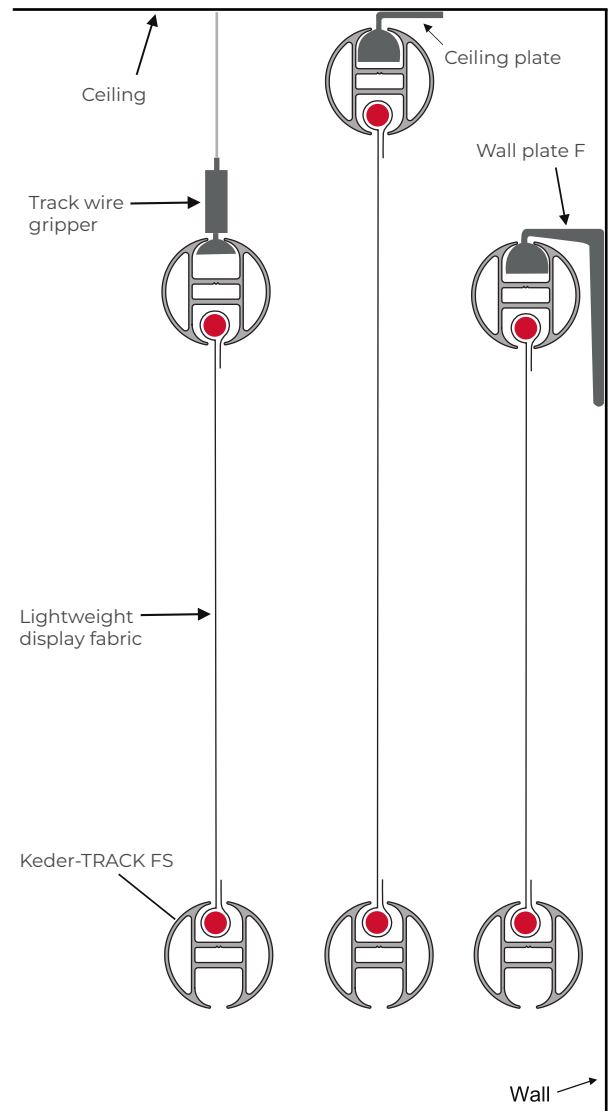
- ✓ Can be used with fabrics, mesh and PVC banners
- ✓ A range of fixings for hanging and wall mounting
- ✓ Easy to install and change by end users
- ✓ Pocket and rod or weld-on keder



▶ Profile



▶ Example Fitting



▶ Specifications

Material

Aluminium 6063 T6

Dimensions

Diameter: 30mm

Length: 6100mm

Finish

- Anodised
- Custom powder coat

Compatible Parts

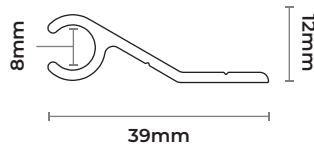
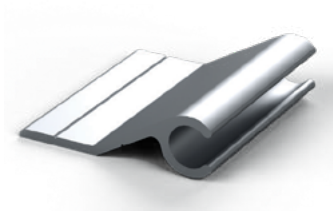
- See [Keder Accessories](#)

Keder-TRACK W

- ✓ Easy, simple banner fixing solution
- ✓ Can be used for PVC banners, mesh and fabrics
- ✓ Pocket and rod or weld-on Keder
- ✓ Compatible Keder: 6mm diameter



▶ Profile



▶ Example Fitting

▶ Specifications

Material

Aluminium 6063 T6

Dimensions

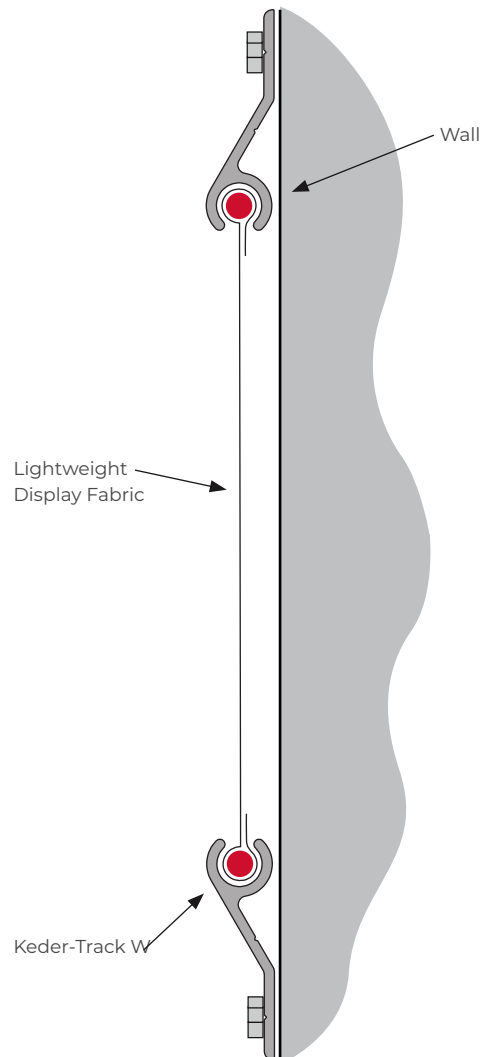
Width: 39mm

Depth: 12mm

Length: 6 100mm

Finish

- Mill



Keder-TRACK Accessories



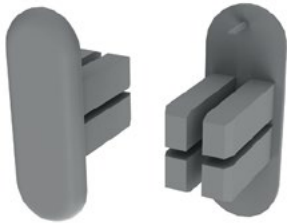
Corner FT



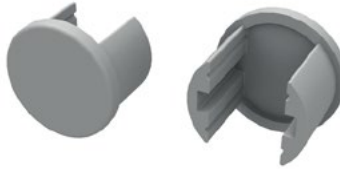
Corner RT



Wall Plate T



End Cap F



End Cap R



Wall Plate F



Connector S



Connector C



Wall Plate PF



Wall Plate R



Floor / Ceiling Wire Gripper



Track Wire Gripper



Wire Rope



Standard Eye-Bolt



Forged Eye-Bolt



Offset Wire Gripper



Corner Connector



Keder



About Spirit Displays

Partnering with our clients for over 15 years.

Spirit Displays fabricate custom aluminium frame systems for the graphics and signage industry, specialising in tailor-made solutions. We are a family-run company based in the UK, yet boasting a global reach with offices, warehousing facilities and distributors all over the world.

Who We Are

Innovative and Design Led

Being natural born problem-solvers and having a wealth of experience in the graphic display business, means we can confidently deliver complex projects others may shy away from, as well as, stock-in-trade solutions.

Service and Support Driven

We have a deep sense of duty to make sure our customers' projects are delivered on time and backed up by a supportive team. We work closely with our clients, lending our expertise and support from initial brief through to installation.

Commitment to Quality

Known for our quick turnaround and competitive pricing, we never compromise on the quality of our products. We are proud that our customers often comment that we build some of the best frames and lightboxes in the market.

What We Do

From LED light boxes and multi-panel wall displays, to 3D hanging signage and banner wraps for truck sides, Spirit Displays has a wide range of products which are known throughout the industry for their quality and innovative design. Our focus on research and development, provides continuous improvement to existing products, creation of new products and enables us to bring our clients effective but simple display solutions.

We also manufacture a range of systems for our global distributors, who are able to supply our products to their clients with complete confidence that they are backed by a company that has been built on the promise that we will always strive to deliver the best products to market.

What sets Spirit Displays apart is our flexibility when it comes to how we approach the challenges our clients face. Besides our standard offering, we offer custom-built display and signage solutions which, along with our extensive experience, allows our clients to achieve their individual objectives, whatever they might be.

We have a team of professional, friendly sales and support staff standing by to have a chat. You can contact us at our Head Office in London on +44 20 8684 0455, or [click here to contact us by email](#) and see how we can assist you with your display needs.

Contact Us

(Head Office – UK)

Unit 1, Lawson Hunt Industrial Park, Broadbridge Heath, West Sussex, RH12 3JR, United Kingdom

UK local: 0844 800 9612 | Int: +44 20 8684 0455

Email: info@spirit-displays.com

