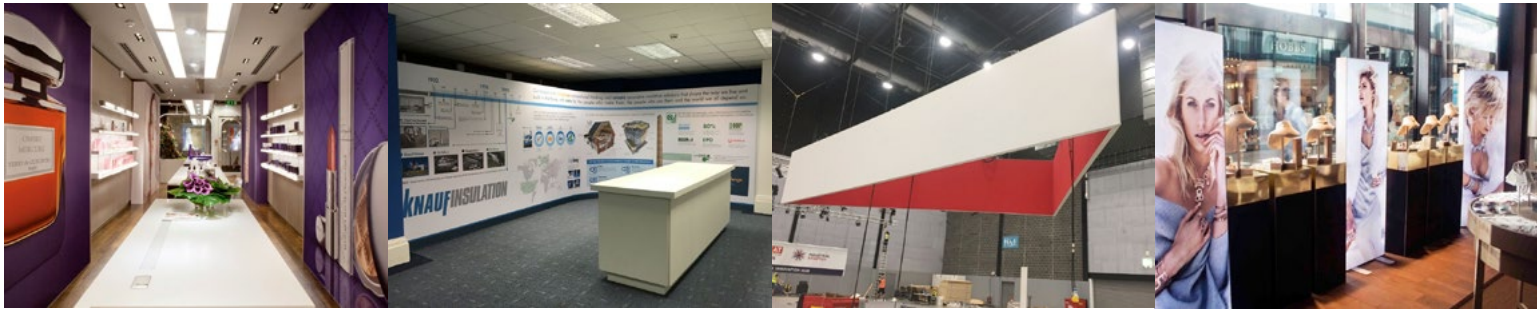




Spirit-TEX™ Fabric Systems



A fabric display system which offers flexibility for large scale applications.

The Spirit-TEX™ Fabric Tensioning System from Spirit Displays is a unique range of aluminium display profiles which solves common sizing challenges when producing tension fabric displays. It offers compatibility with dye-sub, UV and latex printed fabrics, a greater tolerance for large sizes and a simpler finish without the need for stitching, Spirit-TEX™ displays are always perfectly tensioned.

Product Details

Spirit-TEX™ is an improvement on existing frames. Spirit Displays recognises the benefit of silicone edge graphics and the system caters for those who want to use it purely with silicone to all edges.

There are however still situations where correct sizing of fabrics poses a problem. This is especially true when they are very large, very small, or of irregular shape. The use of silicone to the top edge with the introduction of the add-on gripper profile means that tensioning these fabrics is done easily during the installation process. As a result, pre-building frames to test that the graphics fit is no longer necessary which saves time, space and money.

For more information on our Spirit-TEX patents [click here](#).

Product Specifications

- ✓ Compatible with 14mm silicone and Spirit-TEX™ gripper
- ✓ Profiles held in 3060mm (10') and 6130mm (20') lengths
- ✓ Small wall frames to large structural builds

Product Variations

- ✓ Silver, black and white as standard stock
- ✓ Single- and double-sided
- ✓ Non-illuminated and lightbox profiles

Detailed Data Sheets

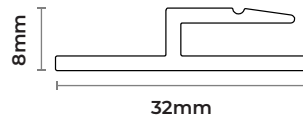
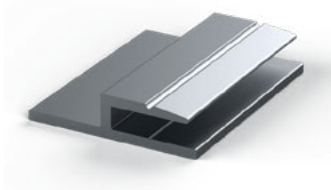
| | | | |
|----------------------------|----------------------|-----------|------------|
| TEX-8 > | TEX-18 > | TEX-27 > | TEX-32 > |
| TEX-40 > | TEX-48C > | TEX-48D > | TEX-55 > |
| TEX-65 > | TEX-65 CORNER > | TEX-100 > | TEX-120D > |
| FREE STANDING FOOTPLATES > | QUICK BRACE & LOCK > | GRIPPER > | BRACKETS > |
| TEX-TAPE > | | | |

TEX-8

- ✓ A retrofit profile for framing out recesses
- ✓ Convert rigid face boxes and signs to fabric
- ✓ Compatible with Spirit-TEX Gripper System



► Profile



► Specifications

Material

Aluminium 6063 T6

Dimensions

Depth: 8mm

Width: 32mm

Length: 3060mm

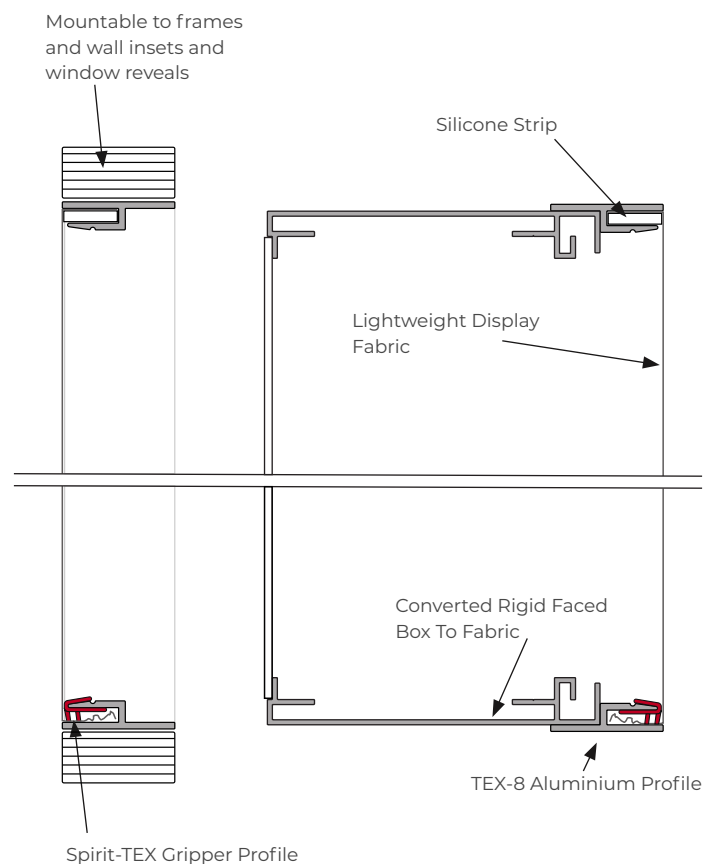
Finish

- Anodised
- Stock powder coat - black and white
- Other finishes available

Compatible Parts

- Spirit-TEX Gripper
- Silicone strip

► Example Fitting

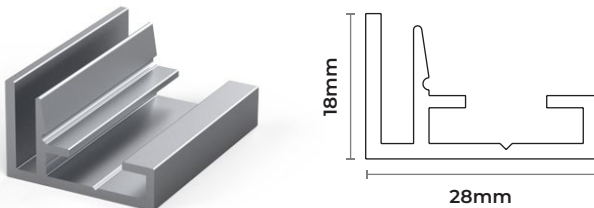


TEX-18

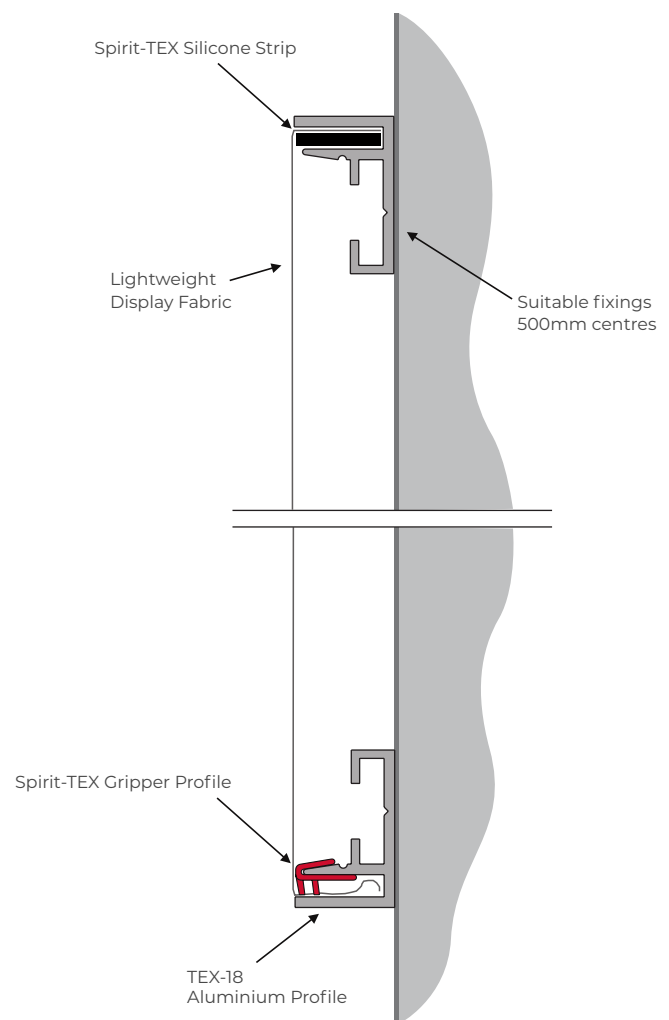
- ✓ A versatile profile for use on a wide variety of wall surfaces
- ✓ Lightweight and cost-effective
- ✓ Ideal for fixing and tensioning most lightweight textiles
- ✓ Suitable for installing large non-illuminated fabrics



► Profile



► Example Fitting



► Specifications

Material

Aluminium 6063 T6

Dimensions

Depth: 18mm

Width: 28mm

Length: 6130mm

Finish

- Anodised
- Stock powder coat - black and white
- Other finishes available

Compatible Parts

- Spirit-TEX Gripper
- Silicone strip
- Connector plates

► Connecting Options

Flat Corner Connector



Straight Connector

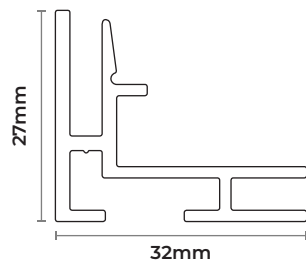


TEX-27

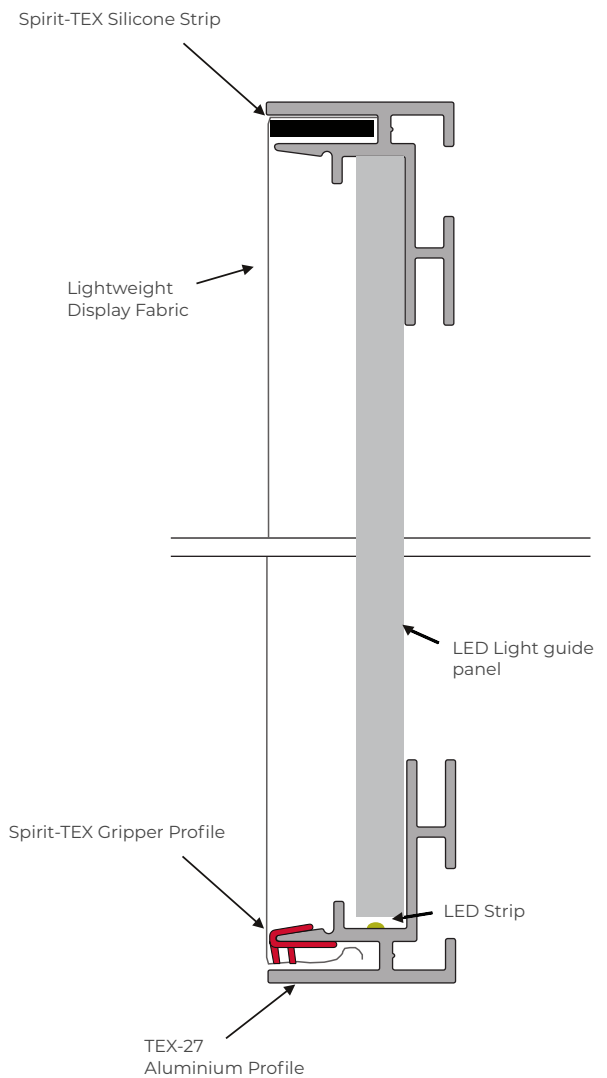
- ✓ For manufacture of super slimline LED lightboxes
- ✓ Uses LED Light sheet illumination
- ✓ Suitable for fixing and tensioning most lightweight textiles
- ✓ Ideal for installing small illuminated fabrics



► Profile



► Example Fitting



► Specifications

Material

Aluminium 6063 T6

Dimensions

Depth: 27mm

Width: 32mm

Length: 3060mm

Finish

- Anodised
- Stock powder coat - black and white
- Other finishes available

Compatible Parts

- Spirit-TEX Gripper
- Silicone strip
- Connector plates

► Connecting Options

Flat Corner Connector



Straight Connector

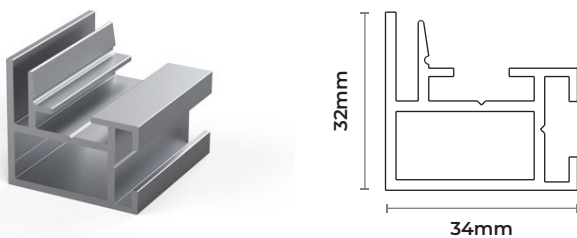


TEX-32

- ✓ A versatile profile for use on a wide variety of wall surfaces
- ✓ Can be used to make medium-sized supporting frames
- ✓ Suitable for fixing and tensioning most lightweight textiles
- ✓ Ideal for installing small and large non-illuminated fabrics
- ✓ Enough depth for acoustic sound absorbing panels



► Profile



► Specifications

Material

Aluminium 6063 T6

Dimensions

Depth: 32mm

Width: 34mm

Length: 6130mm

Finish

- Anodised
- Stock powder coat - black and white
- Other finishes available

Compatible Parts

- Spirit-TEX Gripper
- Spirit-TEX QuickBrace
- Silicone strip
- Connector plates

► Connecting Options

Flat Corner Connector



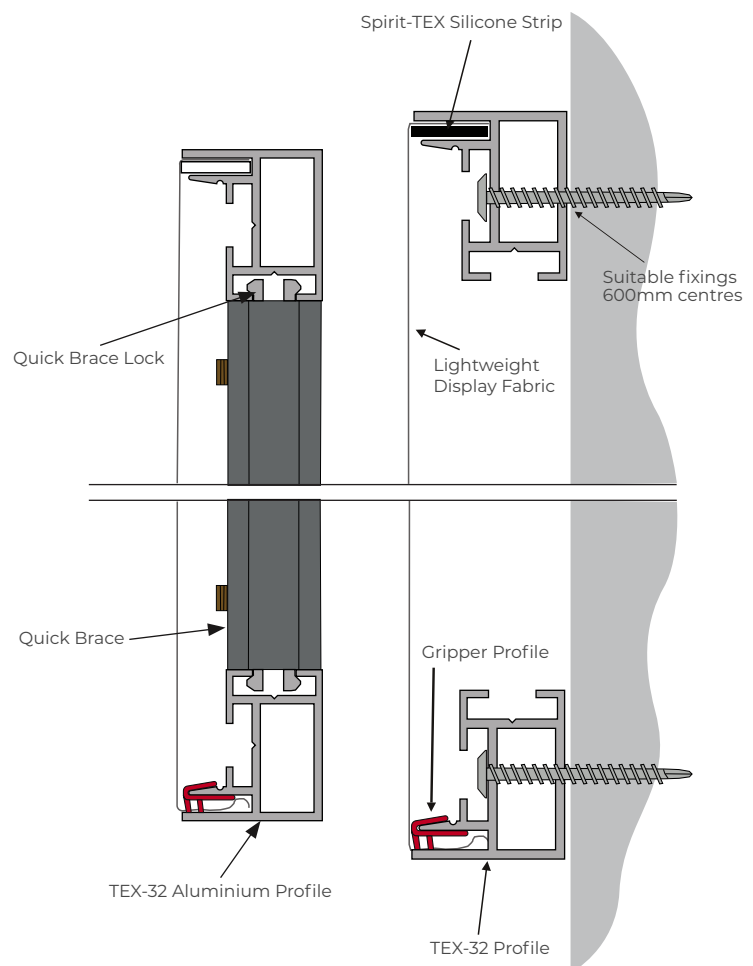
Straight Connector



► Example Fitting

Free-Standing

Wall Mounted

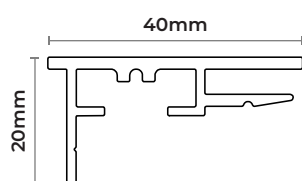
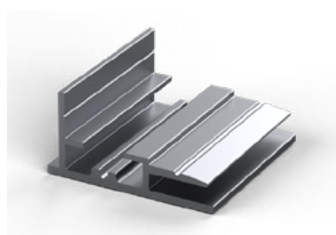


TEX-40

- ✓ A 40mm deep lightbox for textile backlit applications
- ✓ Can be used with dye sub or UV printed fabrics
- ✓ Supplied in kit form or fully manufactured with LEDs
- ✓ Compatible with Spirit-TEX Gripper System



► Profile



► Specifications

Material

Aluminium 6063 T6

Dimensions

Depth: 40mm

Width: 20mm

Length: 6130mm

Finish

- Anodised
- Stock powder coat - black and white
- Other finishes available

Compatible Parts

- Spirit-TEX Gripper
- Silicone strip
- Connector plates

► Connecting Options

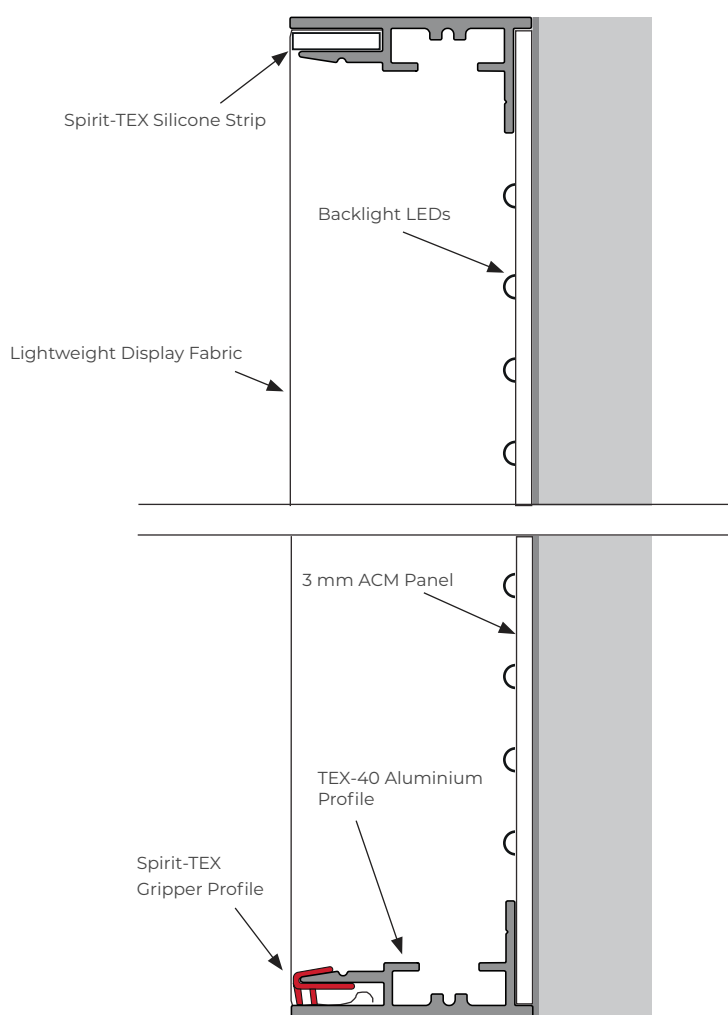
Bent Corner Connector



Straight Connector

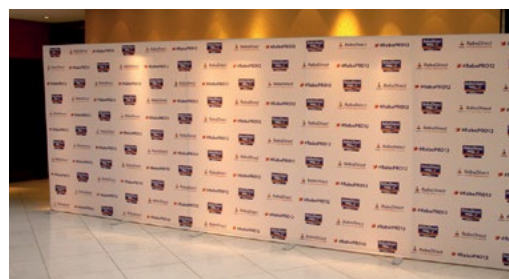


► Example Fitting

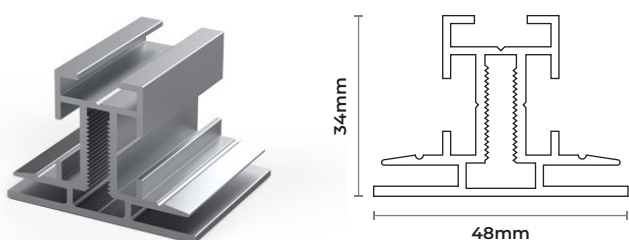


TEX-48D

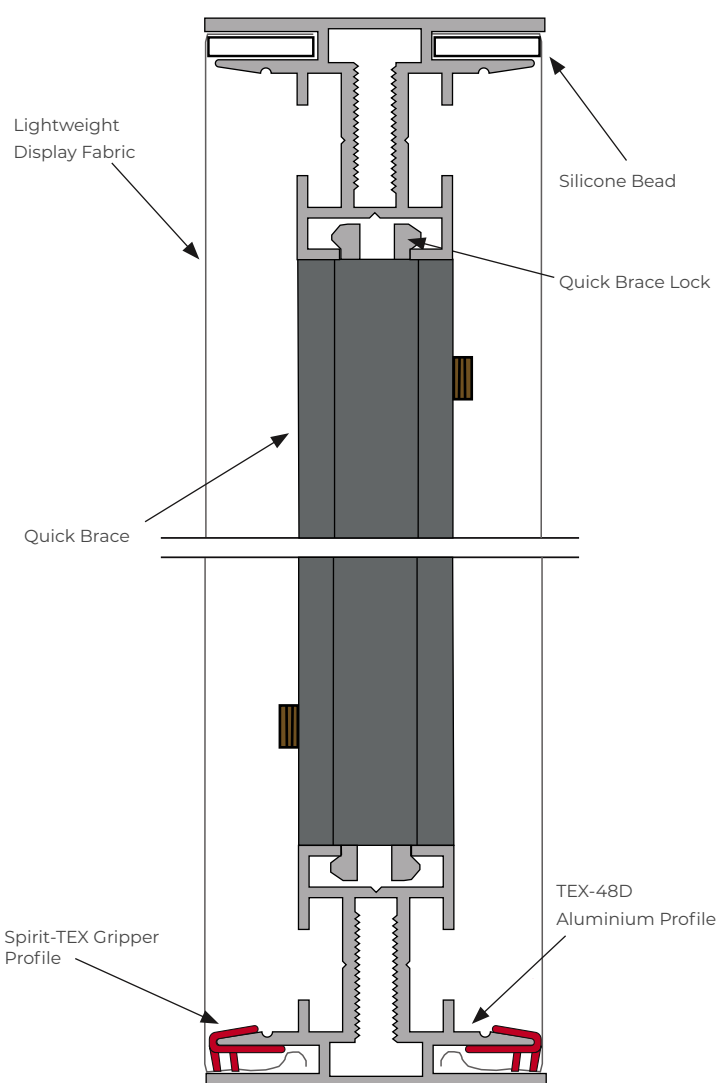
- ✓ A 48mm deep profile for self supported applications
- ✓ Can be rolled to create curved frames and discs
- ✓ Ideal for fixing and tensioning most lightweight textiles
- ✓ Can be used as floor-standing or hanging from cables
- ✓ Smooth outside face



► Profile



► Example Fitting



► Specifications

Material

Aluminium 6063 T6

Dimensions

Depth: 48mm

Width: 34mm

Length: 6130mm

Finish

- Anodised
- Stock powder coat - black and white
- Other finishes available

Compatible Parts

- Spirit-TEX Gripper
- Silicone strip
- Connector plates
- TEX-48C profile
- Spirit-TEX QuickBrace
- Foot plates

► Connecting Options

Flat Corner Connector



Straight Connector

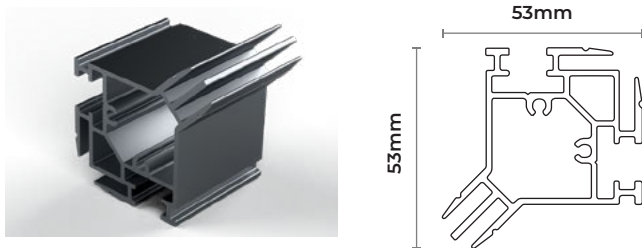


TEX-48C

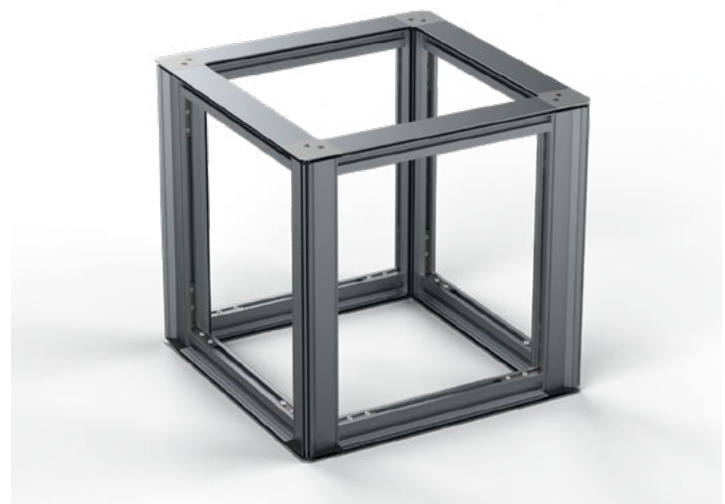
- ✓ Used in conjunction with TEX-48D for building edge to edge walls and cubes
- ✓ Fabrics to inside and outside
- ✓ Can have fabric on six sides
- ✓ Compatible with Spirit-TEX Gripper System



► Profile



► Example Fitting



► Specifications

Material

Aluminium 6063 T6

Dimensions

Depth: 53mm

Width: 53mm

Length: 6130mm

Finish

- Anodised
- Stock powder coat - black and white

Compatible Parts

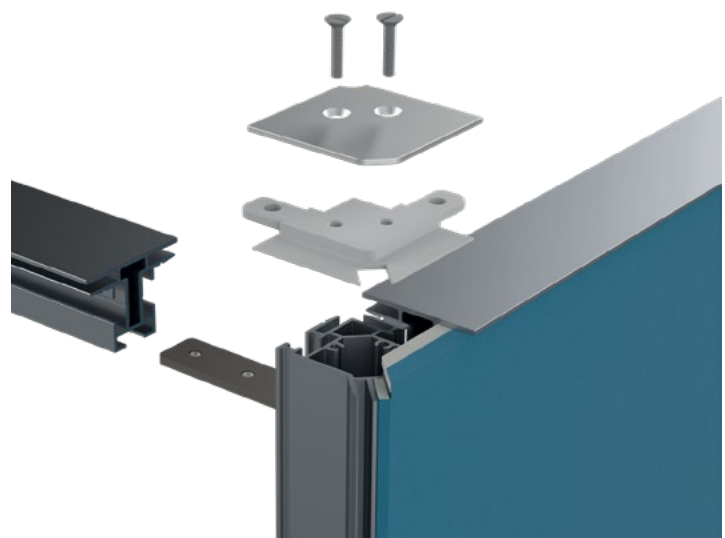
- TEX-48D
- Spirit-TEX Gripper
- Silicone strip
- Connector plates
- End caps
- Quick Brace

► Connecting Options

Bent Corner Connector



Straight Connector

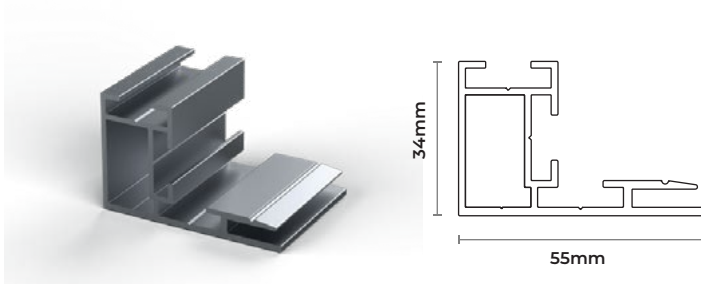


TEX-55

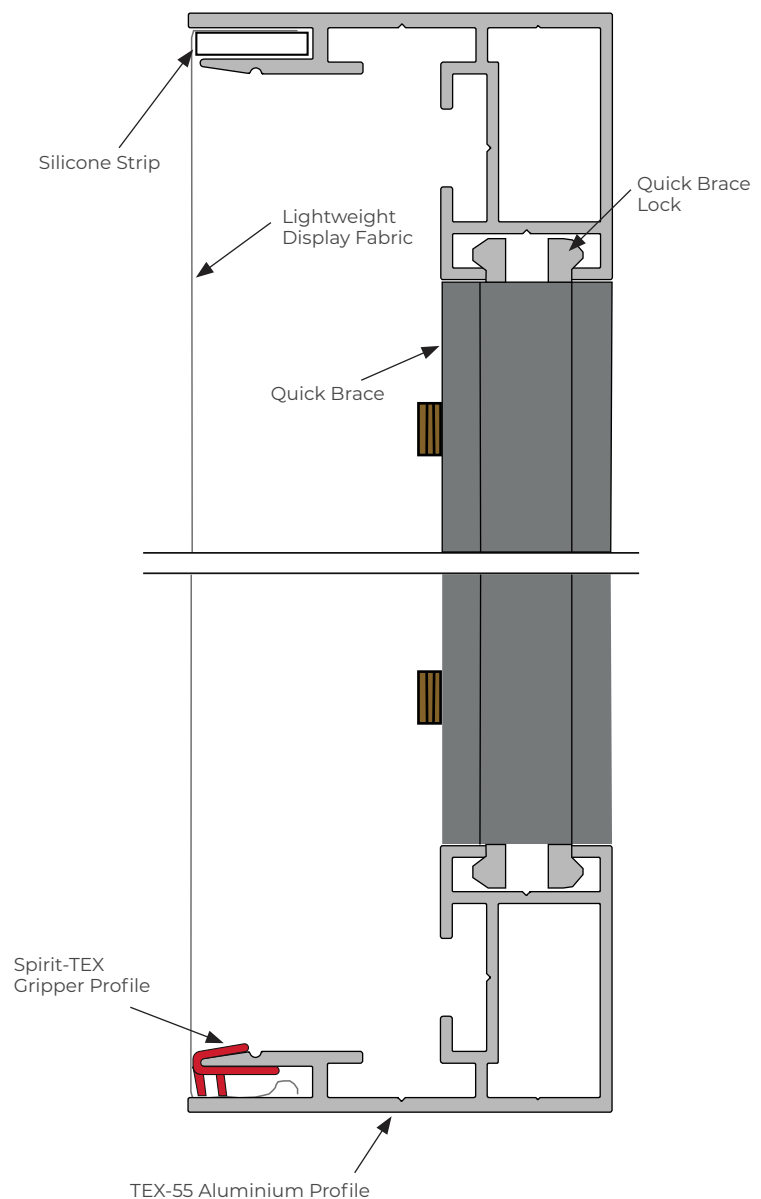
- ✓ A 55mm deep profile for self supported applications
- ✓ Can be used with dye sub or UV printed fabrics
- ✓ Ideal for fixing and tensioning most lightweight textiles
- ✓ Suitable for deeper acoustic panels
- ✓ Compatible with Spirit-TEX Gripper System



► Profile



► Example Fitting



► Specifications

Material

Aluminium 6063 T6

Dimensions

Depth: 55mm

Width: 34mm

Length: 3060mm

Finish

- Anodised
- Stock powder coat - black and white

Compatible Parts

- Spirit-TEX Gripper
- Silicone strip
- Connector plates
- Spirit-TEX QuickBrace

► Connecting Options

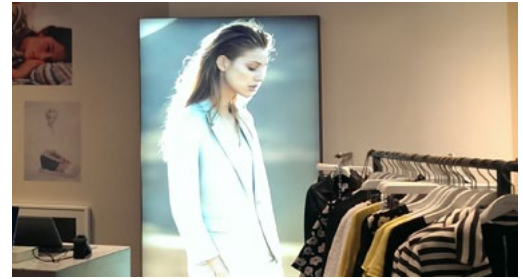
Bent Corner Connector

Straight Connector

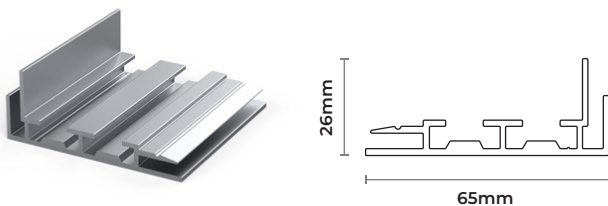


TEX-65

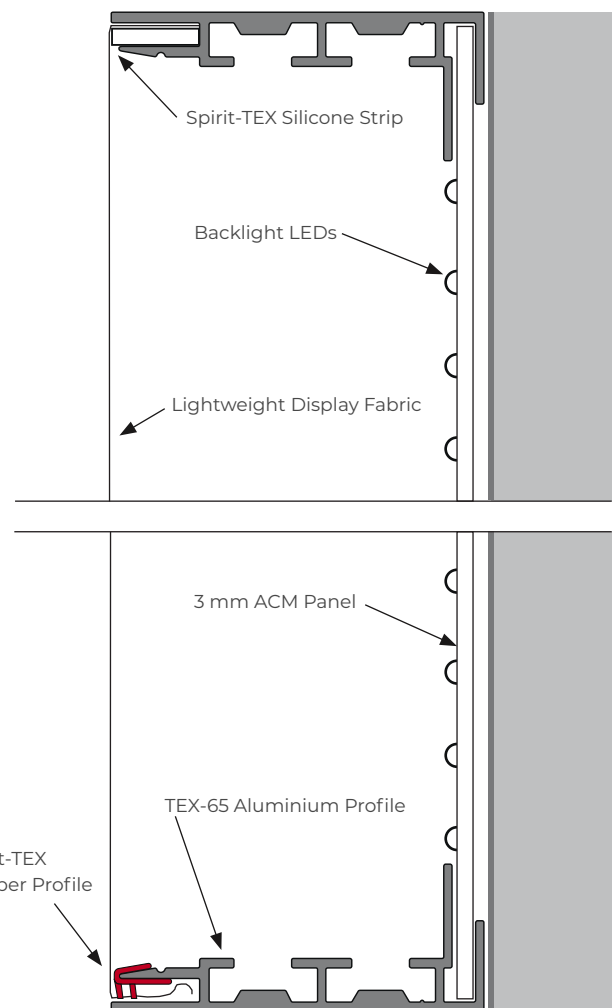
- ✓ A 65mm deep lightbox profile for textile backlit applications
- ✓ Can be used with dye sub or UV printed fabrics
- ✓ Ideal for fixing and tensioning most lightweight textiles
- ✓ Supplied in kit form or fully manufactured with LEDs
- ✓ Compatible with Spirit-TEX Gripper System



► Profile



► Example Fitting



► Specifications

Material

Aluminium 6063 T6

Dimensions

Depth: 65mm

Width: 26mm

Length: 6130mm

Finish

- Anodised
- Stock powder coat - black and white
- Other finishes available

Compatible Parts

- Spirit-TEX Gripper
- Silicone strip
- Connector plates

► Connecting Options

Bent Corner Connector

Straight Connector

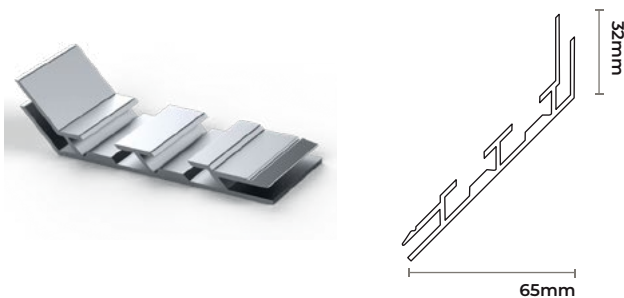


TEX-65 Corner

- ✓ Compliments the TEX-65 Profile System to create frameless corner lightboxes and cubes
- ✓ Compatible with Spirit-TEX Gripper System



► Profile



► Example Fitting



► Specifications

Material

Aluminium 6063 T6

Dimensions

Depth: 65mm

Width: 32mm

Length: 6130mm

Finish

- Anodised
- White powder coat
- Custom powder coat

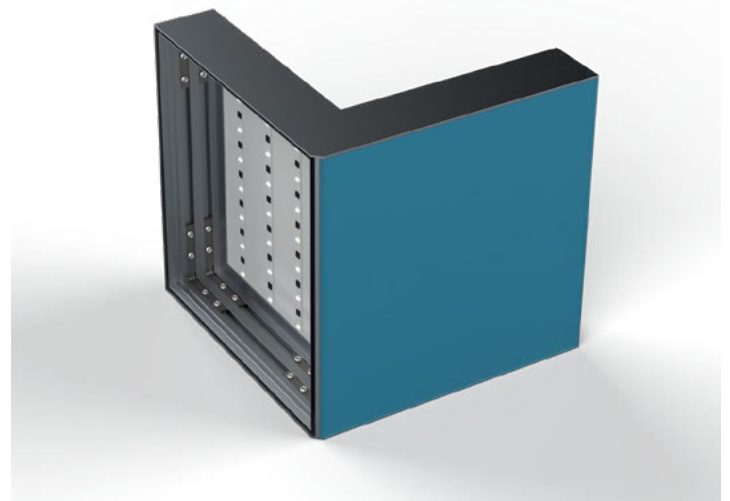
Compatible Parts

- Spirit-TEX Gripper
- Silicone strip
- Connector plates

► Connecting Options

TEX-65 Corner Connector

Straight Connector

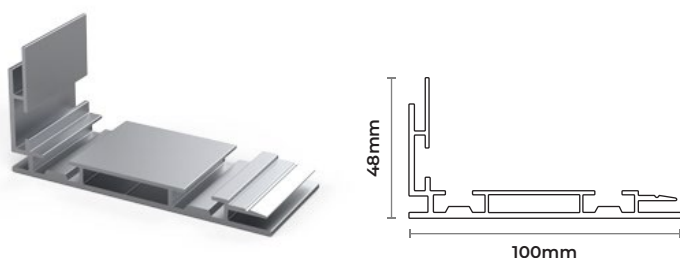


TEX-100

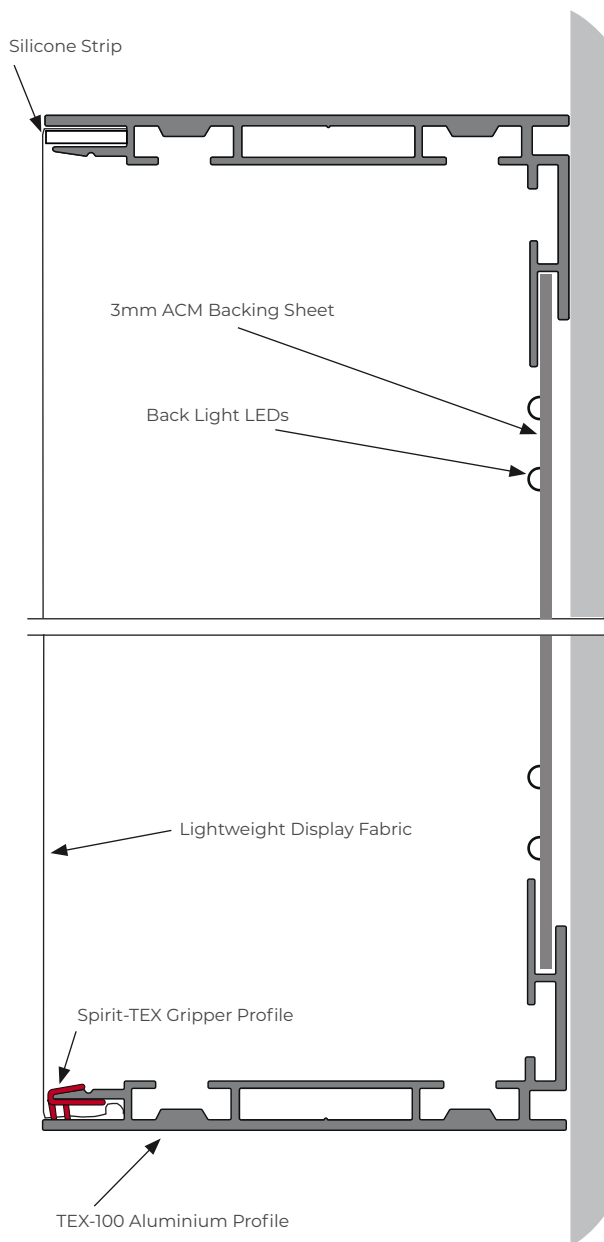
- ✓ A 100mm deep lightbox profile for textile backlit applications
- ✓ Can be used with dye sub or UV printed fabrics
- ✓ Ideal for fixing and tensioning most lightweight textiles
- ✓ Supplied in kit form or fully manufactured with LEDs
- ✓ Compatible with Spirit-TEX Gripper System



► Profile



► Example Fitting



► Specifications

Material

Aluminium 6063 T6

Dimensions

Depth: 100mm

Width: 48mm

Length: 6130mm

Finish

- Anodised
- Stock powder coat - black and white
- Other finishes available

Compatible Parts

- Spirit-TEX Gripper
- Foot plates
- Silicone strip
- Cross brace
- Connector plates

► Connecting Options

Flat Corner Connector



Bent Corner Connector

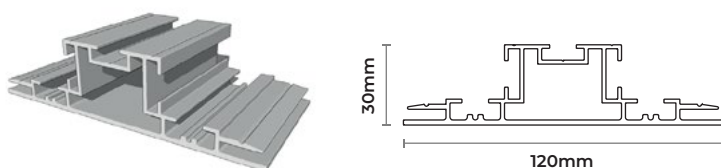


TEX-120D

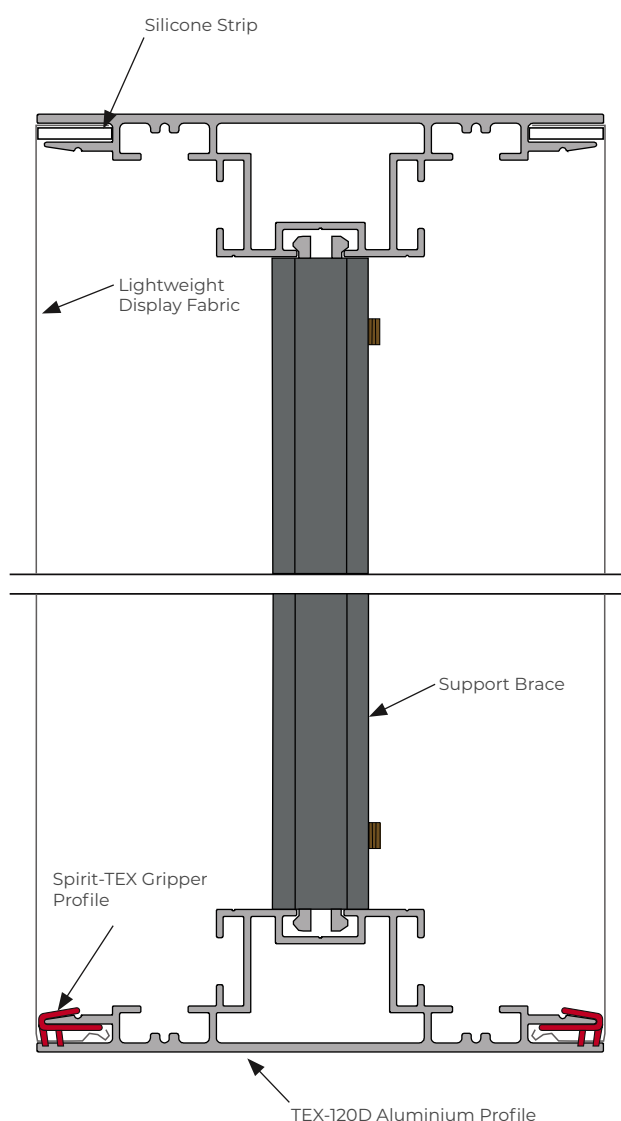
- ✓ A 120mm deep lightbox profile for self-supported applications
- ✓ Can be used with dye sub, latex or UV printed fabrics
- ✓ Supplied in kit form or fully manufactured with edge light LED illumination
- ✓ Can be used as floor-standing or hanging from cables
- ✓ Compatible with Spirit-TEX Gripper System



► Profile



► Example Fitting



► Specifications

Material

Aluminium 6063 T6

Dimensions

Depth: 120mm

Width: 30mm

Length: 6130mm

Finish

- Anodised
- Other finishes available

Compatible Parts

- Spirit-TEX Gripper
- Silicone strip
- Connector plates
- Spirit-TEX QuickBrace
- Footplates
- Cross brace

► Connecting Options

Flat Corner Connector

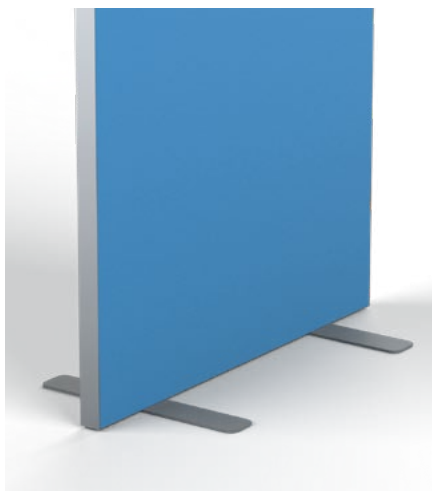


Straight Connector



Free-Standing Footplates

► Flat Footplate



Material

Powder coated mild steel

Stock Colours

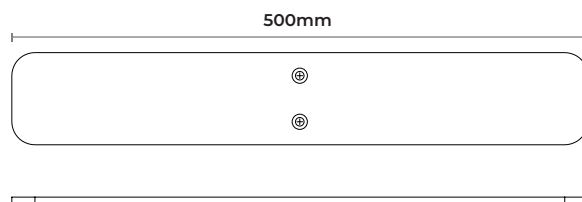
- Silver, black, white

Dimensions

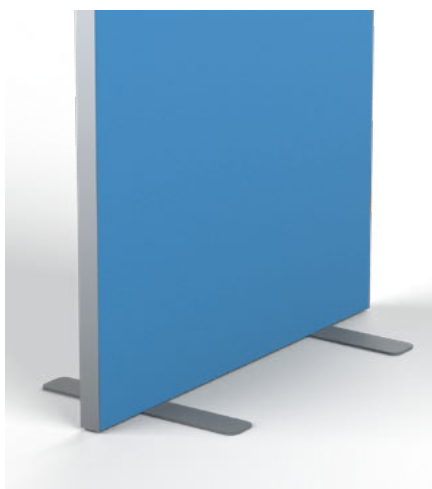
Width: 80mm
Depth: 6mm
Length: 500mm

Weight

1.8kg



► Small Flat Footplate



Material

Powder coated mild steel

Stock Colours

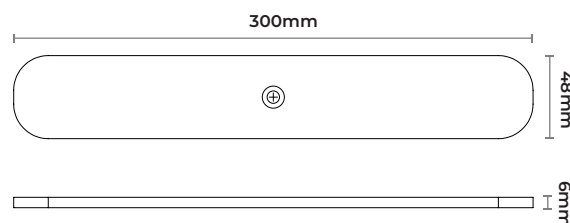
- Silver, black, white

Dimensions

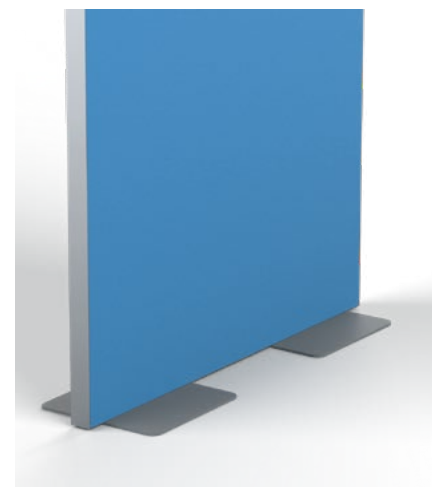
Width: 48mm
Depth: 6mm
Length: 300mm

Weight

600g



► Square Footplate



Material

Powder coated mild steel

Stock Colours

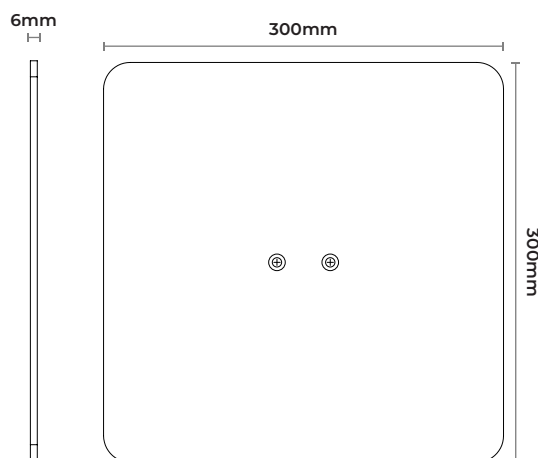
- Silver, black, white

Dimensions

Width: 300mm
Depth: 6mm
Length: 300mm

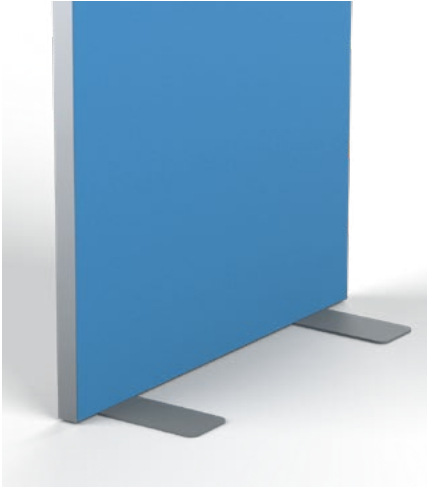
Weight

4kg



Free-Standing Footplates continued

► Half Footplate



Material

Powder coated mild steel

Stock Colours

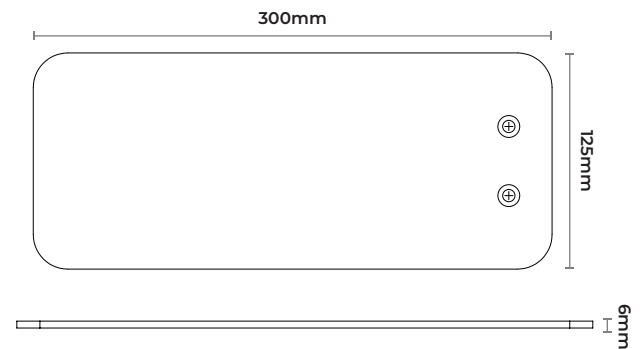
• Silver, black, white

Dimensions

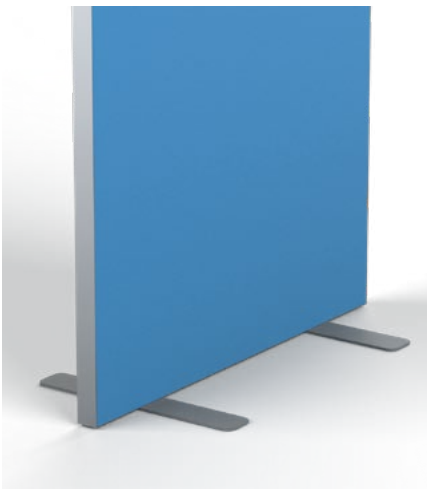
Width: 125mm
Depth: 6mm
Length: 300mm

Weight

1.7kg



► Delta Footplate



Material

Powder coated mild steel

Stock Colours

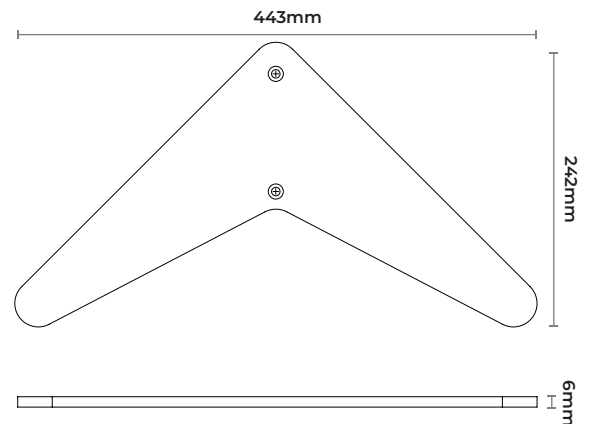
• Silver, black, white

Dimensions

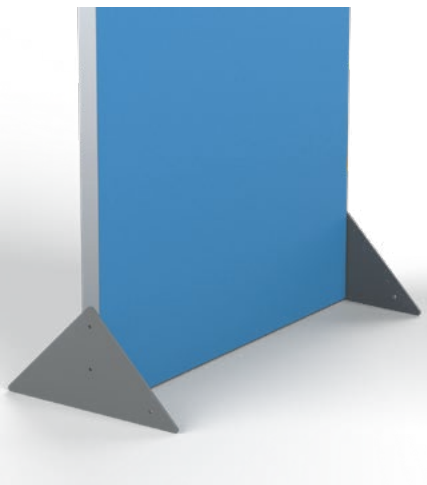
Width: 242mm
Depth: 6mm
Length: 443mm

Weight

2kg



► Triangle Footplate



Material

Powder coated mild steel

Stock Colours

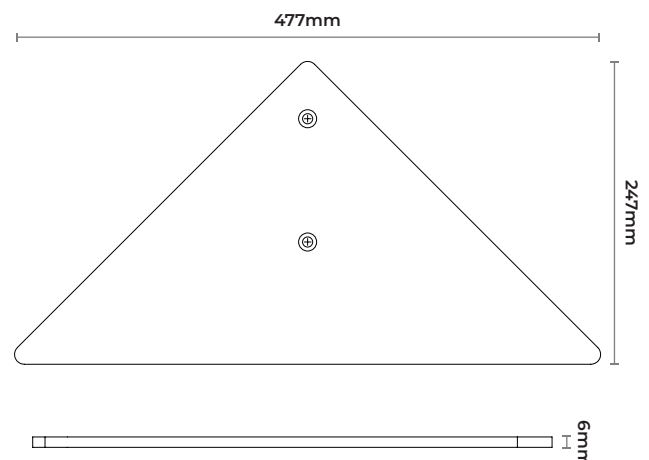
• Silver, black, white

Dimensions

Width: 477mm
Depth: 6mm
Length: 247mm

Weight

3kg

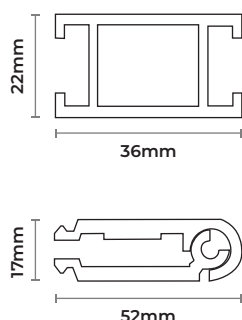
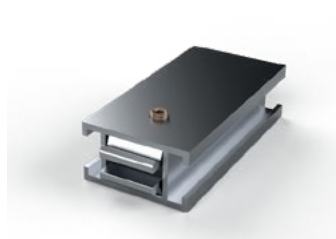


Quick Brace & Lock

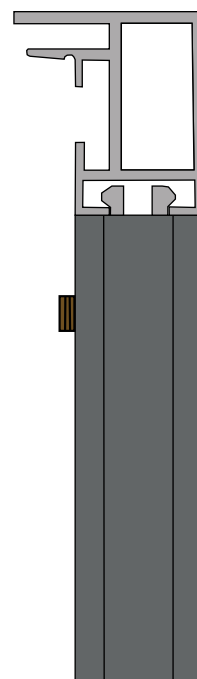
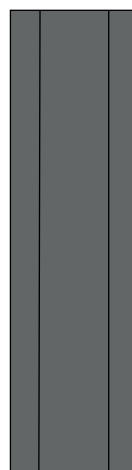
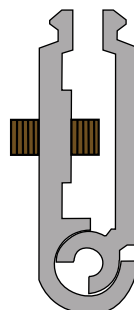
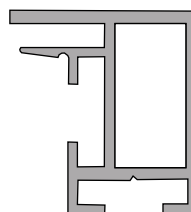
- ✓ Compatible with all Spirit-TEX profiles
- ✓ Easy to assemble, can be fitted after a main frame is assembled



► Profile



► Example Fittings



► Specifications

Material

Aluminium 6063 T6

Dimensions

Width: 36mm

Depth: 22mm

Length: 6130mm

Finish

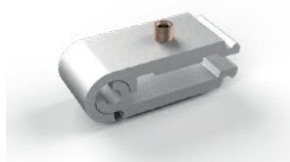
- Anodised

Compatible Parts

- QuickBrace Lock
- All Spirit-TEX profiles

► Connecting Options

Quick Brace Lock



Straight Connector



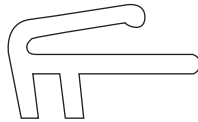
Gripper

- ✓ Suitable for all Spirit-TEX profiles
- ✓ Eliminates the need for silicone edge
- ✓ Especially effective on large and odd shaped frames
- ✓ Can be combined with silicone edge in a single frame

► Profile



3D Illustration



Line Drawing

► Specifications

The Spirit-TEX™ Gripper is the key to this innovative solution. It eliminates the need for silicone edge finishing, so no additional finishing equipment and staffing is required, while still providing a flawless result.

Material

Plastic

Dimensions

Width: 11mm
Depth: 6mm
Length: 3060mm

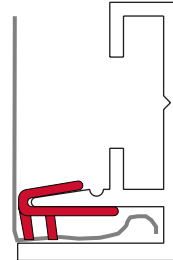
Finish

- White plastic (not visible in the finished frame)

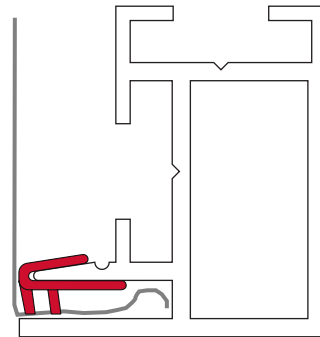
Compatible Parts

- All Spirit-TEX profiles

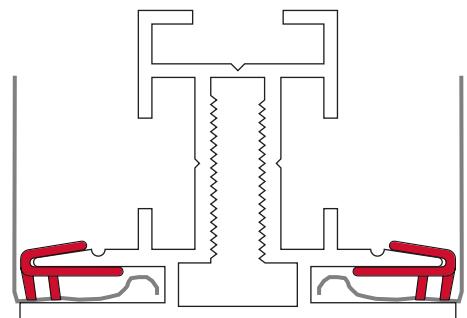
Spirit-TEX 18



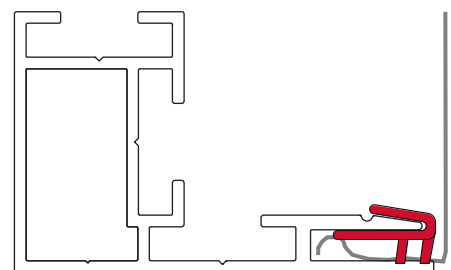
Spirit-TEX 32



Spirit-TEX 48D



Spirit-TEX 55



Brackets

► Specifications

Material

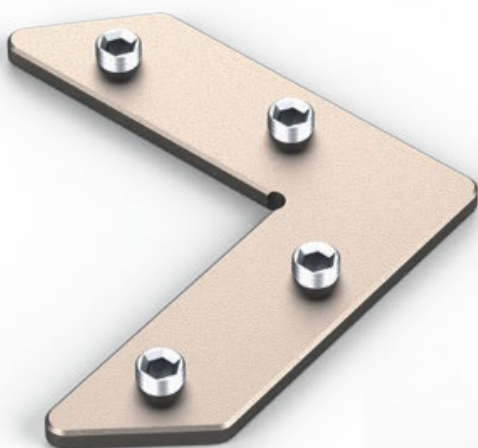
Mild Steel

Finish

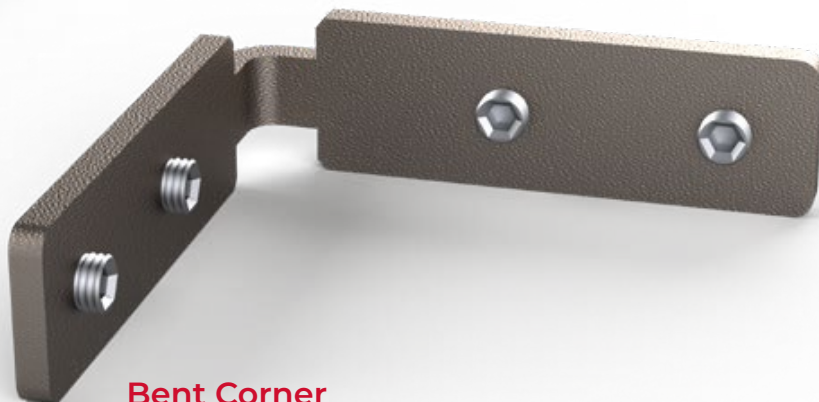
- BZP (Bright Zinc Plate)



Straight



Flat Corner



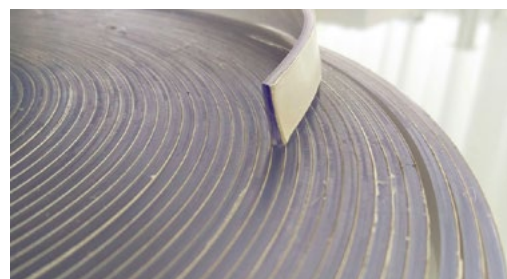
Bent Corner



TEX-65 Corner

TEX-Tape

- ✓ A flexible PVC carrier coated with a high performance adhesive tape
- ✓ A premium self-adhesive tape for use with tension fabric systems
- ✓ Can be used with dye-sub or UV printed fabrics
- ✓ No stitching required
- ✓ Use as top reference edge with Spirit-TEX Gripper System



► Specifications

Material

Adhesive PVC

Dimensions

Width: 14mm

Depth: 3mm

Length: 25m

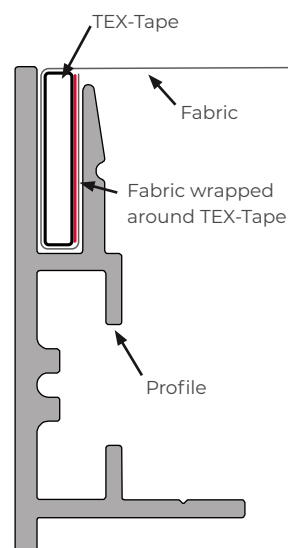
Finish

- Transparent

Compatible Parts

- Spirit-TEX System

► Example Fittings



► Substrate

| Characteristic | Value |
|------------------|--------------------------------|
| Shore A Hardness | DIN 53 505. 77 |
| Brittle Point | DIN 53 372. Approx. -10°C |
| Flexibility | DIN 51 949. -10°C No Break |
| Reaction to Fire | DIN 53 382. Self-extinguishing |
| Flammability | US MVSS302. Inflammable |

► Adhesive

| Characteristic | Value |
|---------------------|--|
| Adhesive | Acrylic |
| Tack | J.DOW NO. 14 |
| Carrier | Non-woven |
| Peel Adhesion | PSTC03 2.0kgs/25mm |
| Shear Strength | PSTC-7 Over 24 hours with 1kg loading on 25mm x 25mm at 25°C |
| Service Temperature | -30°C to 120°C |



About Spirit Displays

Partnering with our clients for over 15 years.

Spirit Displays fabricate custom aluminium frame systems for the graphics and signage industry, specialising in tailor-made solutions. We are a family-run company based in the UK, yet boasting a global reach with offices, warehousing facilities and distributors all over the world.

Who We Are

Innovative and Design Led

Being natural born problem-solvers and having a wealth of experience in the graphic display business, means we can confidently deliver complex projects others may shy away from, as well as, stock-in-trade solutions.

Service and Support Driven

We have a deep sense of duty to make sure our customers' projects are delivered on time and backed up by a supportive team. We work closely with our clients, lending our expertise and support from initial brief through to installation.

Commitment to Quality

Known for our quick turnaround and competitive pricing, we never compromise on the quality of our products. We are proud that our customers often comment that we build some of the best frames and lightboxes in the market.

What We Do

From LED light boxes and multi-panel wall displays, to 3D hanging signage and banner wraps for truck sides, Spirit Displays has a wide range of products which are known throughout the industry for their quality and innovative design. Our focus on research and development, provides continuous improvement to existing products, creation of new products and enables us to bring our clients effective but simple display solutions.

We also manufacture a range of systems for our global distributors, who are able to supply our products to their clients with complete confidence that they are backed by a company that has been built on the promise that we will always strive to deliver the best products to market.

What sets Spirit Displays apart is our flexibility when it comes to how we approach the challenges our clients face. Besides our standard offering, we offer custom-built display and signage solutions which, along with our extensive experience, allows our clients to achieve their individual objectives, whatever they might be.

We have a team of professional, friendly sales and support staff standing by to have a chat. You can contact us at our Head Office in London on +44 20 8684 0455, or [click here to contact us by email](#) and see how we can assist you with your display needs.

Contact Us

(Head Office – UK)

Unit 1, Lawson Hunt Industrial Park, Broadbridge Heath, West Sussex, RH12 3JR, United Kingdom

UK local: 0844 800 9612 | Int: +44 20 8684 0455

Email: info@spirit-displays.com

